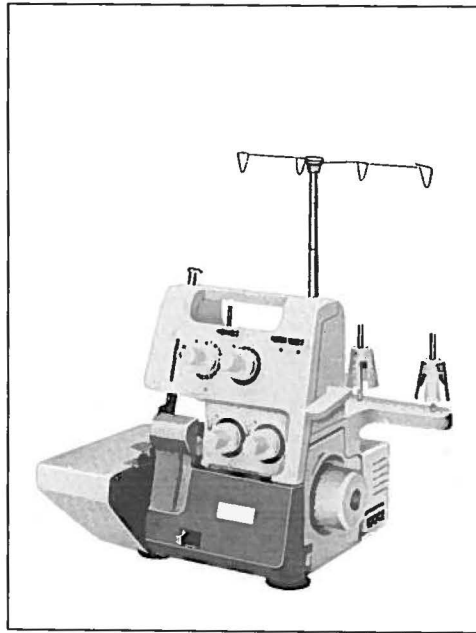
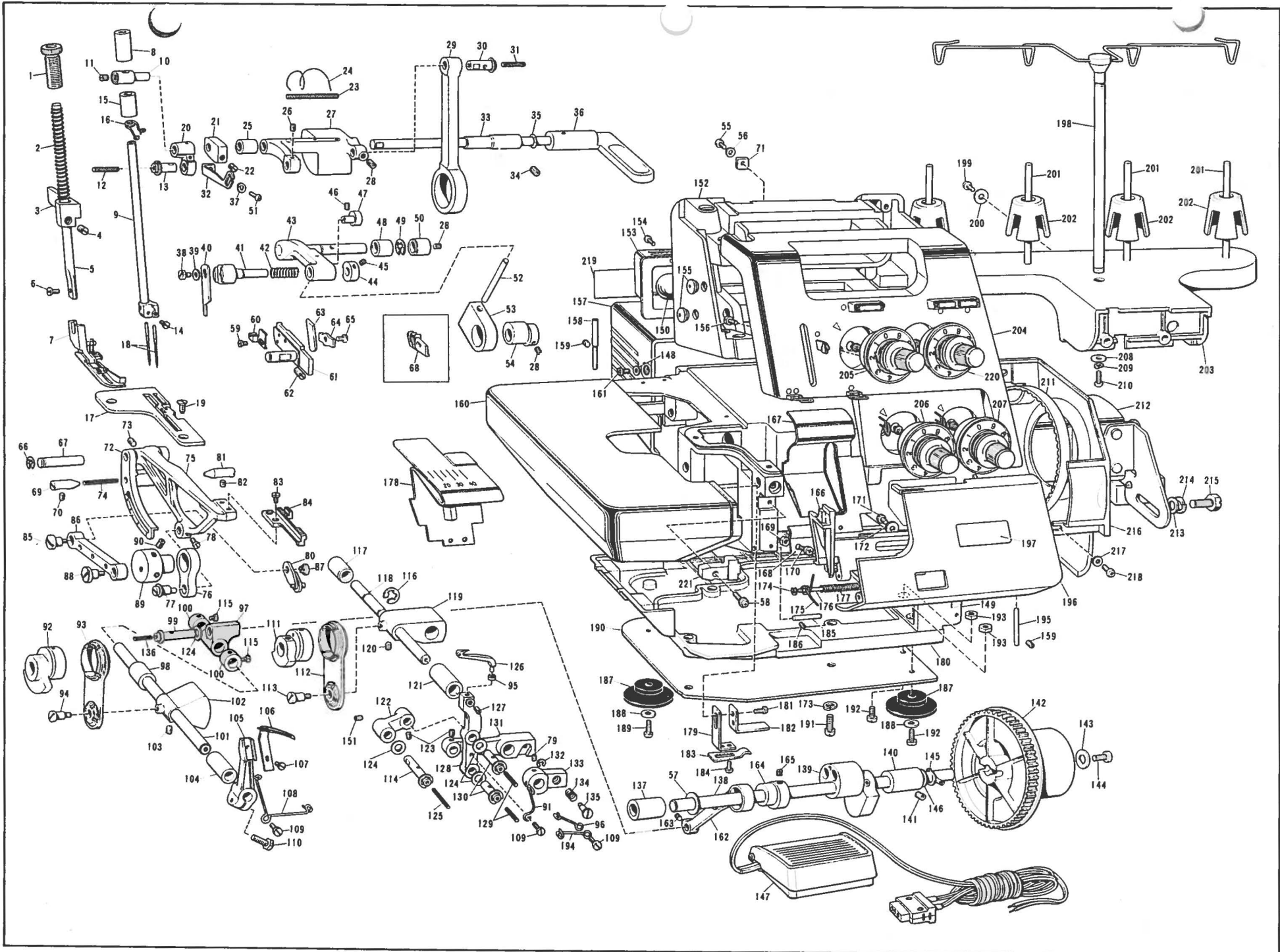


PARTS BOOK
FOR
brother® homelock
MODEL 524N



Please clarify Ref. No. and Parts No.
as well as parts name when you
place an order.



Ref. No.	Parts	Parts Name	Ref. No.	Parts No.	Parts Name	Ref. No.	Parts No.	Parts Name	Ref. No.	Parts No.	Parts Name
1	14286001	Presser adjusting screw	61	127386001	Lower knife holder, C	121	126610000	Looper shaft bushing, front	181	009670712	Set screw
2	126662001	Presser bar spring	62	151605002	Set screw	122	127258001	Guide lever	182	126839001	Spring fixing plate, B
3	127773001	Presser bar bracket	63	127134001	Lower knife	123	012500632	Set screw	183	126530001	Cloth plate cover spring plate
4	100058003	Set screw	64	117515001	Lower knife presser plate	124	127125001	Washer	184	007679302	Set screw
5	126660001	Presser bar	65	062680812	Set screw	125	126796000	Wick	185	126526001	Front cover stopper shaft
6	126851001	Set screw	66	048050346	Stop ring	126	127260001	Spreader	186	013660612	Set screw
7	127383001	Presser foot assembly	67	126584000	Feed bar shaft	127	014400522	Set screw	187	126540000	Cushion
8	126702000	Needle bar bushing, upper	68	126909001	Needle guard (for heavy use)	128	127256001	Looper link	188	025710232	Washer
9	126784001	Needle bar	69	127349001	Center pin	129	117429001	Wick	189	142957001	Set screw
10	126856001	Needle bar connecting stud	70	012500632	Set screw	130	127291001	Looper link stud	190	127390001	Base plate
11	100289002	Set screw	71	127254001	Nut	131	127162001	Looper guide lever	191	009781812	Set screw
12	117429001	Wick	72	127348000	Feed bar lever	132	048030342	Stop ring	192	107423001	Set screw
13	127189001	Needle bar link shaft	73	012500632	Set screw	133	126638001	Looper change lever	193	105367002	Nut
14	009660414	Set screw	74	142869000	Feed lever wick	134	126808001	Spring	194	127404001	Thread guide, C
15	126703000	Needle bar bushing, lower	75	127345001	Feed bar	135	126809001	Set screw	195	126524001	Front cover pin
16	126713001	Needle bar thread guide	76	126872000	Vertical feed lever	136	117429001	Wick	196	127007008	Front cover
17	126733001	Needle plate, C	77	127859001	Vertical adjusting shaft	137	127690000	Driving shaft bushing, left	197		Name plate
18	142935014	Needle TEx1	78	104908002	Set screw	138	127788001	Driving shaft	198	127108001	Spool stand assembly
19	100032001	Set screw	79	014680622	Set screw	139	127114001	Needle bar eccentric wheel assembly	199	002401204	Set screw
20	126657001	Needle bar connecting link	80	126797001	Feed adjusting stopper	140	126588000	Driving shaft bushing, right	200	025040332	Washer
21	126661001	Presser lifter cam	81	116605001	Center pin	141	012500632	Set screw	201	142914001	Spool pin
22	151603001	Set screw	82	012500632	Set screw	142	127830000	Timing pulley	202	126863000	Spool cushion
23	126796000	Wick	83	100080004	Set screw	143	025770232	Washer	203	127056000	Spool stand base
24	126795001	Wick spring	84	126589001	Feed dog	144	009781412	Set screw	204	127426004	Panel assembly
25	142822000	Driving shaft bushing, left	85	126586001	Feed adjusting knob	145	048100142	Stop ring	205	127428001	Needle thread tension dial assembly
26	012500632	Set screw	86	127776000	Feed link	146	127797000	Washer	206	127430001	Thread tension dial assembly
27	126566000	Needle bar driving lever	87	126587001	Feed adjusting nut	147		Controller complete	207	127437001	Thread tension dial assembly
28	012500632	Set screw	88	126582001	Feed link stud screw	148	127753001	Washer	208	025040332	Washer
29	126564000	Needle bar rod	89	127485001	Feed eccentric wheel	149	127477001	Front cover hinge	209	028040242	Spring washer
30	127186001	Rod shaft	90	012500632	Set screw	150		Sew-light assembly	210	002401204	Set screw
31	126592000	Wick	91	126907001	Thread guide, A	151	012500632	Set screw	211	126533000	Timing belt
32	126912001	Thread take-up	92	127147001	Double chain looper eccentric wheel	152		Machine body	212		Motor complete
33	147085000	Driving shaft bushing, right	93	127821001	Double chain looper rod	153		Rear cover	213	100197004	Washer
34	012500632	Set screw	94	127965001	Stud screw	154		Set screw	214	129107001	Spring washer
35	120265001	Spring washer	95	127306001	Washer	155	114255001	Cap	215	103741001	Set screw
36	126794001	Presser bar lifter	96	126905001	Thread take-up	156	009681212	Set screw	216	126534001	Belt cover
37	028040242	Spring washer	97	142884001	Lever	157	126536000	Motor cover	217	025040332	Washer
38	125176001	Set screw	98	126611000	Looper shaft bushing, rear	158	126791001	Hinge pin	218	002400804	Set screw
39	105161003	Washer	99	127288001	Double chain rod shaft	159	013679312	Set screw	219		Model mark
40	127734001	Upper knife	100	127748001	Lever collar	160	127863001	Cloth plate cover	220	127434001	Needle thread tension dial assembly
41	126769001	Upper knife holder	101	126647000	Double chain looper shaft	161	002400804	Set screw	221	127004003	Front cover block
42	126772001	Upper knife presser spring	102	127824000	Under looper joint	162	127862000	Double chain rod			
43	127886001	Upper knife driving arm	103	012500632	Set screw	163	012500632	Set screw	122991001		Vinyl bag for accessories
44	127669001	Upper knife holder guide	104	126610000	Looper shaft bushing, front	164	147079000	Double chain rod cam	12739001		Screw driver
45	014400522	Set screw	105	126625000	Under looper lever	165	107053001	Set screw	117466000		Pincette
46	014400522	Set screw	106	126648001	Double chain looper assembly	166	127005005	Front cover guide	123443003		Needle set
47	127656001	Upper knife holder guide shaft	107	009670512	Set screw	167	126523001	Front cover, C	523603001		Machine brush
48	126595000	Driving arm bushing, left	108	126913001	Looper thread take-up	168	126521001	Front cover spring plate	142603001		Spool cap
49	048070342	Stop ring	109	105123003	Set screw	169	021300302	Nut	127610000		Thread net
50	126594000	Driving arm bushing, right	110	142936001	Set screw	170	002309405	Set screw	193541026		Instruction book (English)
51	009670512	Set screw	111	127146001	Looper rod eccentric wheel	171	007679302	Set screw	126736001		Machine cover
52	127805001	Upper knife driving lever	112	127821001	Looper rod	172	025350332	Washer			
53	127795000	Upper knife driving lever guide	113	127965001	Stud screw	173	028770242	Spring washer			
54	127783000	Upper knife eccentric wheel	114	127292001	Guide lever shaft	174	048020346	Stop ring			
55	002401204	Set screw	115	111443001	Set screw	175	126520001	Front cover stopper spring			
56	126850000	Washer	116	048060342	Stop ring	176	126518001	Front cover guide shaft			
57	126571001	Washer	117	126611000	Lever shaft bushing, rear	177	126519001	Spring			
58	126855001	Set screw	118	127782000	Looper shaft	178	126761001	Front cover for double chain stitch			
59	009660414	Set screw	119	127841000	Looper joint	179	126837001	Spring fixing plate, A			
60	126759001	Needle guard	120	012500632	Set screw	180	127334000	Oil pan			

M524N
H5070434
Printed in Japan

From the library of: Superior Sewing Machine & Supply LLC